

At a glance

All companies in the following sectors are insured with the German Social Accident Insurance Institution for the raw materials and chemical industry (BG RCI): building materials – pit – quarry, mining, chemical industry, leather industry, paper making and equipment, and sugar.

The BG RCI has just under 35,000 member companies with approximately 1.6 million insured employees. In the year under review, it paid benefits amounting to around EUR 1 billion.

We take responsibility for you!

Institutions for statutory accident insurance and prevention are part of the social network. The contributions are made solely by the companies, but we assume employers' liability under private law for occupational accidents, commuting accidents and occupational diseases in the event of loss or damage (discharging of liability).

Everything from a single source

As an industrial institution for statutory accident insurance and prevention, our statutory duty is to prevent occupational accidents, occupational diseases and work-related health risks. We provide comprehensive assistance to companies in all occupational safety matters, train insured employees, investigate causes of accidents and test technical equipment.

We provide insured employees with comprehensive and expert support following an occupational accident or disease. We take all measures necessary to ensure medical, social or occupational rehabilitation for insured employees. This all follows the principle of "everything from a single source".

Information and service in your area

The prevention centres and departments for prevention are ready to help with any questions you might have about occupational safety and health protection. Contact www.bgrci.de; Page ID: #WBC2

Insured events and benefits are dealt with in the relevant regional offices. Contact www.bgrci.de; Page ID: #1U070

The areas of responsibility of the regional offices and prevention centres are structured in line with the borders of Germany's federal states and administrative districts.

Any questions regarding membership, compulsory insurance, assessments for risk rating groups and calculating premiums will be answered by the department for membership and premiums. Contact www.bgrci.de; Page ID: #96PE

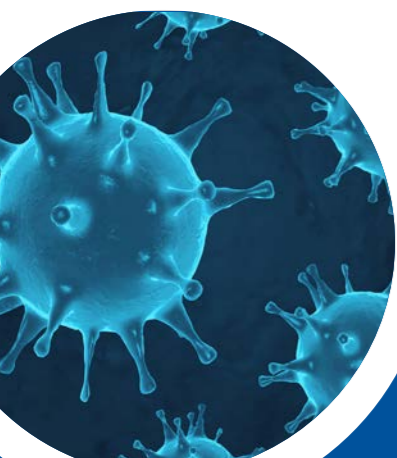
Give us a call

To ensure an even better level of service, we have set up a central phone number for you. You can reach us from anywhere in Germany on **+49 6221 5108-0**.

German Social Accident Insurance Institution for the raw materials and chemical industry

Kurfürsten-Anlage 62
69115 Heidelberg, Germany
Tel.: +49 6221 5108-0
www.bgrci.de
info@bgrci.de

Picture credits:
Cover image and image, left: ©ahmet - stock.adobe.com
Image, centre: BG RCI
Image, right: ©Dolle - stock.adobe.com



**At a glance
2020**

Latest figures on BG RCI

2020

Dates	BG RCI		Building materials - pit - quarry		Mining		Chemical industry		Leather industry		Paper making and equipment		Sugar	
	2020	2019	2020	2019	2020	2019	2020	2019	2020	2019	2020	2019	2020	2019
Member companies														
Operating sites	35,056	34,129	4,883	4,764	176	203	17,704	16,990	11,931	11,806	310	312	52	54
Of which, companies liable for contributions	25,980	26,437	4,676	4,723	140	140	14,118	14,324	6,714	6,919	299	298	33	33
Working hours	1,984,811,070	2,042,606,992	194,522,164	193,516,179	64,594,549	62,434,186	1,540,319,700	1,591,870,081	101,564,150	107,889,505	68,649,247	70,528,230	9,804,902	9,154,801
Full-time employees	1,305,794	1,317,810	127,975	124,849	42,496	40,280	1,013,368	1,027,013	66,819	69,606	45,164	45,502	6,451	5,906
Total earnings in EUR	62,135,285,961	63,407,381,819	5,016,861,799	4,946,139,383	2,090,436,398	2,042,181,797	49,940,454,028	51,129,417,638	2,513,627,542	2,710,365,910	2,255,040,903	2,259,553,313	318,865,291	319,723,778
Accidents														
Reportable occupational accidents	22,760	25,073	5,451	5,541	421	480	14,008	16,006	1,575	1,723	1,204	1,229	101	89
■ per 1,000 full-time employees	17.4	19.0	42.6	44.4	9.9	11.9	13.8	15.6	23.6	24.8	26.7	27.0	15.7	15.1
■ per 1 million working hours	11.5	12.3	28.0	28.6	6.5	7.7	9.1	10.1	15.5	16.0	17.5	17.4	10.3	9.7
Reportable commuting accidents	4,474	5,239	394	433	97	124	3,582	4,182	223	314	162	169	16	16
■ per 1,000 full-time employees	2.8	3.2	2.5	2.8	1.9	2.5	2.9	3.3	2.7	3.6	2.9	3.0	2.0	2.2
■ Fatal occupational accidents	13	11	8	7	1	–	4	2	–	1	–	1	–	–
■ Fatal commuting accidents	9	13	–	2	–	–	8	10	1	–	–	1	–	–
New accident pensions														
■ Occupational accidents	483	485	152	147	32	23	245	254	29	26	23	29	2	6
■ Commuting accidents	179	151	24	18	6	7	134	117	7	5	7	4	1	–
Occupational diseases														
Cases of suspecting occupational diseases	6,997	7,592	844	754	1,806	1,725	3,689	3,289	272	188	202	209	55	54
Cases decided in year under review	7,729	6,538	880	636	2,215	1,716	3,922	3,122	263	182	241	200	48	44
■ of these, recognised occupational diseases	1,891	1,404	334	205	638	492	769	578	46	40	86	73	16	13
■ of these, new pensions	701	553	62	39	355	282	254	204	10	13	14	9	6	6
Expenditure														
Prevention (EUR millions)	107.06	116.17												
Benefits (EUR millions)	987.16	992.87												
Administrative costs (EUR millions)	125.09	132.72												